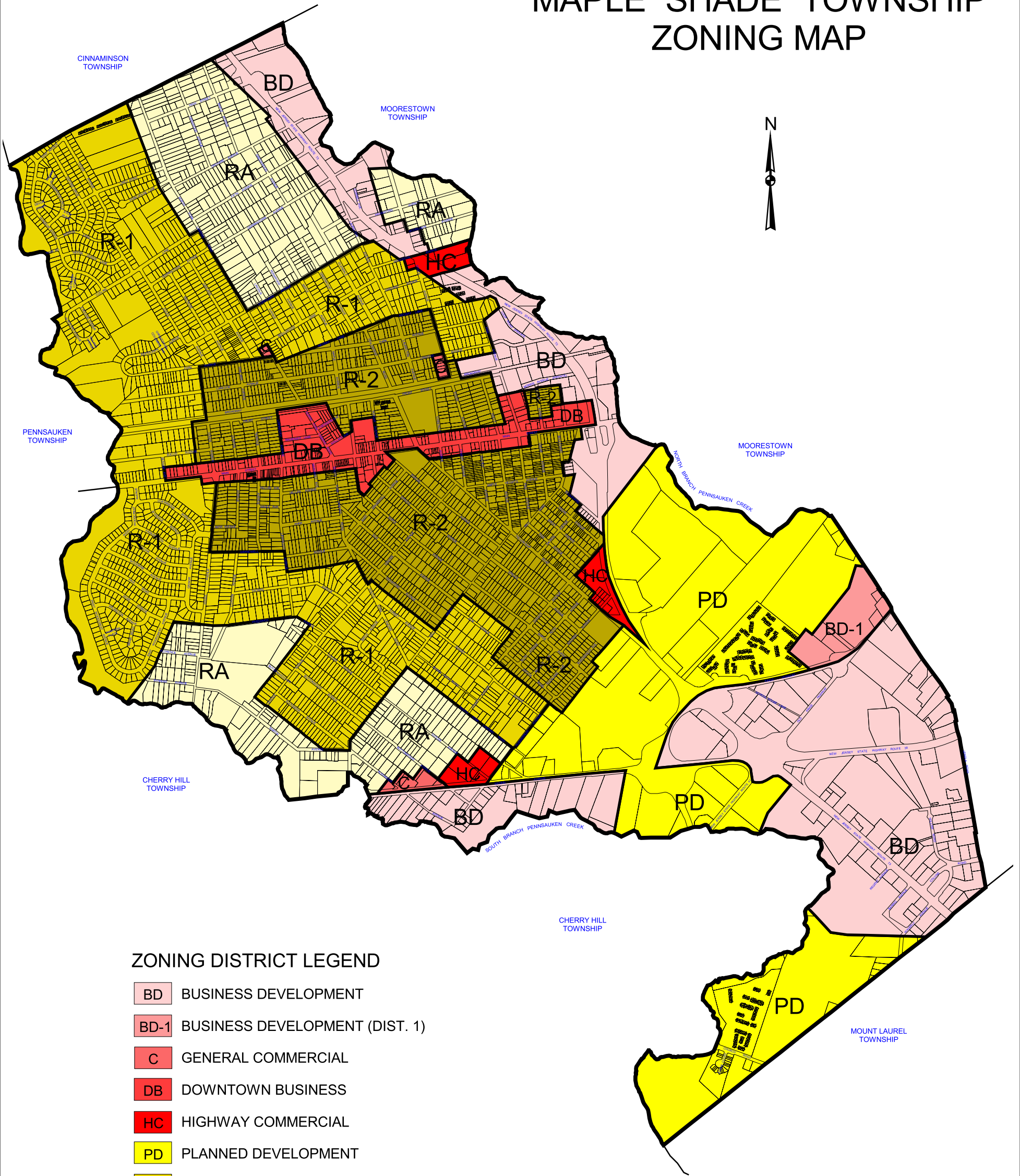


# MAPLE SHADE TOWNSHIP ZONING MAP




## ZONING DISTRICT LEGEND

- BD BUSINESS DEVELOPMENT
- BD-1 BUSINESS DEVELOPMENT (DIST. 1)
- C GENERAL COMMERCIAL
- DB DOWNTOWN BUSINESS
- HC HIGHWAY COMMERCIAL
- PD PLANNED DEVELOPMENT
- R-1 RESIDENTIAL
- R-2 RESIDENTIAL
- RA RESIDENTIAL

NOTES:  
 1. PARCEL MAPPING FROM BURLINGTON COUNTY GIS DEPARTMENT, OCTOBER 2002.  
 2. ZONING BOUNDARIES ARE BASED ON PARCEL MAPPING AND ARE APPROXIMATE.

THIS MAP WAS DEVELOPED USING BURLINGTON COUNTY GIS DIGITAL DATA. THIS SECONDARY PRODUCT HAS NOT BEEN VERIFIED BY BURLINGTON COUNTY AND IS NOT COUNTY AUTHORIZED.

APPROVED _____ DATE _____		REVISIONS		DATE	BY	 <b>RICHARD A. ALAIMO</b> ASSOCIATION OF ENGINEERS <i>Consulting Engineers</i>	CLIENT: MAPLE SHADE TOWNSHIP		DATE: JULY 2004	SHEET
<i>Richard A. Alaimo - P.E.</i> N.J. PROFESSIONAL ENGINEER LICENCE NO. 13195							PROJECT LOCATION: MAPLE SHADE TOWNSHIP BURLINGTON COUNTY NEW JERSEY		PROJECT NO.: C-280-286 CONTRACT NO.: DRAWN BY: MAC CHECKED BY: J.S.A. / K.R.	FILE NO.: <div style="border: 1px solid black; border-radius: 50%; width: 20px; height: 20px; text-align: center; line-height: 20px; margin: 0 auto;">1</div>

200 High Street  
 2 Market Street  
 Mount Holly, N.J.  
 Paterson, N.J.

**ZONING MAP**  
 SCALE: 1" = 1500' (APPROX.)